



tempio<sup>®</sup> SYSTEMS

**tempio<sup>®</sup> SYSTEMS**



# VENTILATED FAÇADE FACHADA VENTILADA









tempio® [projects] Jan Dang Library, South Korea



## TEMPIO VENTILATED FAÇADE ADVANTAGES

### VENTAJAS DE LA FACHADA VENTILADA TEMPIO



\_Energetic costs 25-40% reduction  
\_Reducción del gasto energético entre el 25-40%



\_Increased thermal and acoustic comfort  
\_Aumento del confort térmico y acústico



\_No water condensation and waterproofness  
\_Eliminación del agua condensada e impermeabilidad



\_Passive ventilation and thermal isolation  
\_Ventilación pasiva y aislación térmica



\_Double wall  
\_Doble pared



\_Self-cleaning with rainwater  
\_Autolimpiable con agua de lluvia



\_Resistant to the passage of time  
\_Resistente al paso del tiempo



\_0% wastewater discharged  
\_0% de aguas residuales vertidas



\_Low CO<sub>2</sub> emissions  
\_Mínima emisión de CO<sub>2</sub>



\_Waste material recycling  
\_Reciclaje del material sobrante



\_Direct application without creating debris  
\_Aplicación directa sin crear escombros



\_Piece by piece replaceable system  
\_Sistema reemplazable pieza por pieza



\_Revaluation of property  
\_Revalorización del inmueble



\_Hidden crevices and conductions  
\_Grietas y paso de conducciones ocultas



tempio® [projects] Cementos Benidorm, Spain

The ceramic material is extruded porcelain stoneware which is coloured throughout the whole body, with a natural or glazed finish in a wide range of colours, fired at a temperature of 1200°C.

Leading European laboratories have certified the physical characteristics of this material:

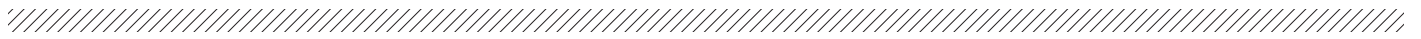
- Frost-resistant material pursuant to standard UNE EN 10545 withstanding 100 frost/defrost cycles.
- Non-combustible material.
- High impact resistance >0,75 pursuant to standard UNE EN 10545.
- Non-variable material, easy to clean.

En cuanto al material cerámico, se trata de un gres porcelánico extruido color en masa, con acabado natural o esmaltado en una amplia gama de colores y cocido a una temperatura de 1200°C.

Los mejores laboratorios europeos certifican las cualidades físicas del material:

- Material resistente al hielo según norma UNE EN 10545 soportando 100 ciclos de hielo/deshielo.
- Se trata de un material no combustible.
- Importante resistencia a golpes >0,75 según norma UNE EN 10545.
- Material invariable y fácil de limpiar.

# FK SYSTEM



FK-16  
FK-20



FK-L 1/16  
FK-L 1/20



FK-L 2/16



FK-L 3/16



FK-L 4/16



FK-O 8/20



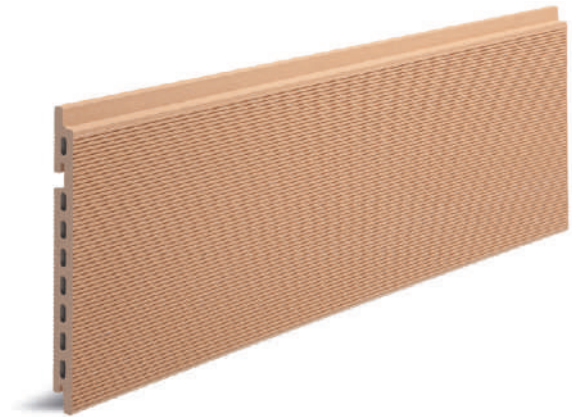
FK-1BA 5/16



FK-2B 5/16



FK-1BB 5/16

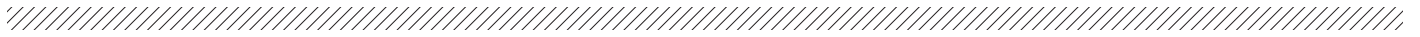


FK-L 59/16

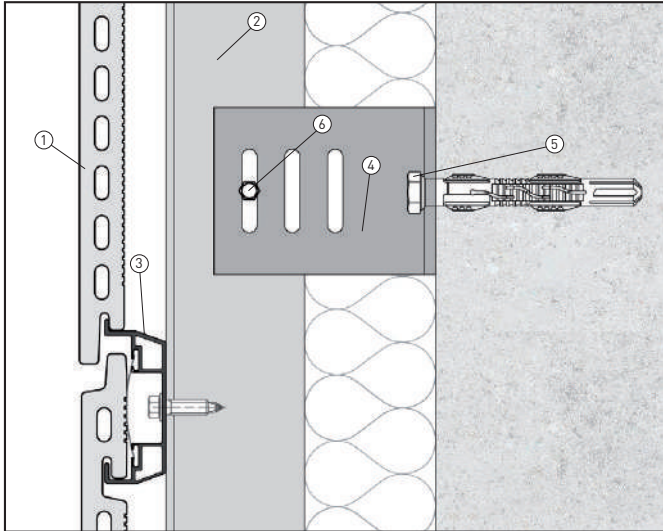
Height module/inch Alto módulo/mm	FK-16	FK-20	FK-L 1/16	FK-L 1/20	FK-L 2/16	FK-L 3/16	FK-L 4/16	FK-O 6/20	FK-L 59/16	FK-1BA 5/16	FK-1BB 5/16	FK-2B 5/16
200 - 7.87"	■	■	■						■			
240 - 9.44"	■											
250 - 9.84"	■											
280 - 11.02"	■											
300 - 11.81"	■	■	■	■	■		■	■		■	■	■
310 - 12.20"		■										
315 - 12.40"	■											
340 - 13.38"	■											
350 - 13.78"	■	■	■			■						
380 - 14.96"	■											
400 - 15.74"	■	■	■	■		■						
450 - 17.71"	■											
500 - 19.68"	■	■	■									
510 - 20.07"	■											
545 - 21.45"		■	■									
600 - 23.62"		■										
length piece/mm largo pieza/mm	< 1200	< 1500	< 1200	< 1500	< 1200	< 1200	< 1200	< 1500	< 1200	< 1200	< 1200	< 1200



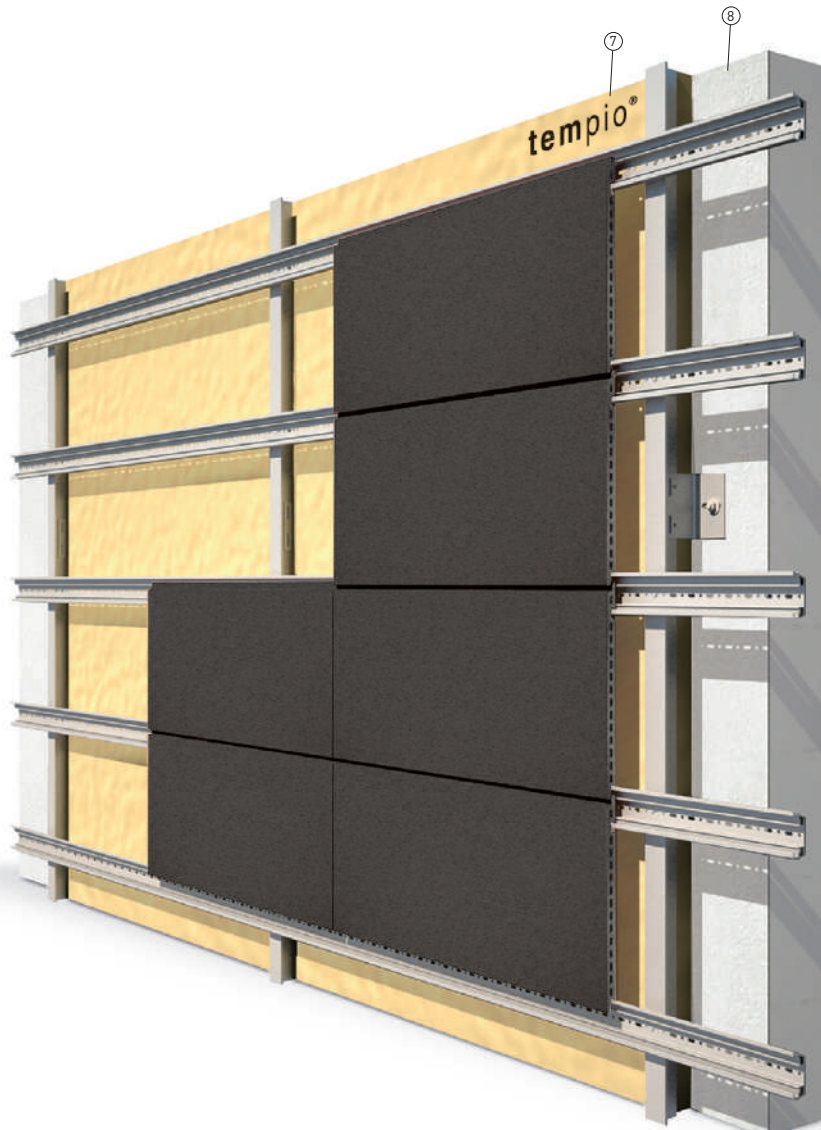
# FK SYSTEM



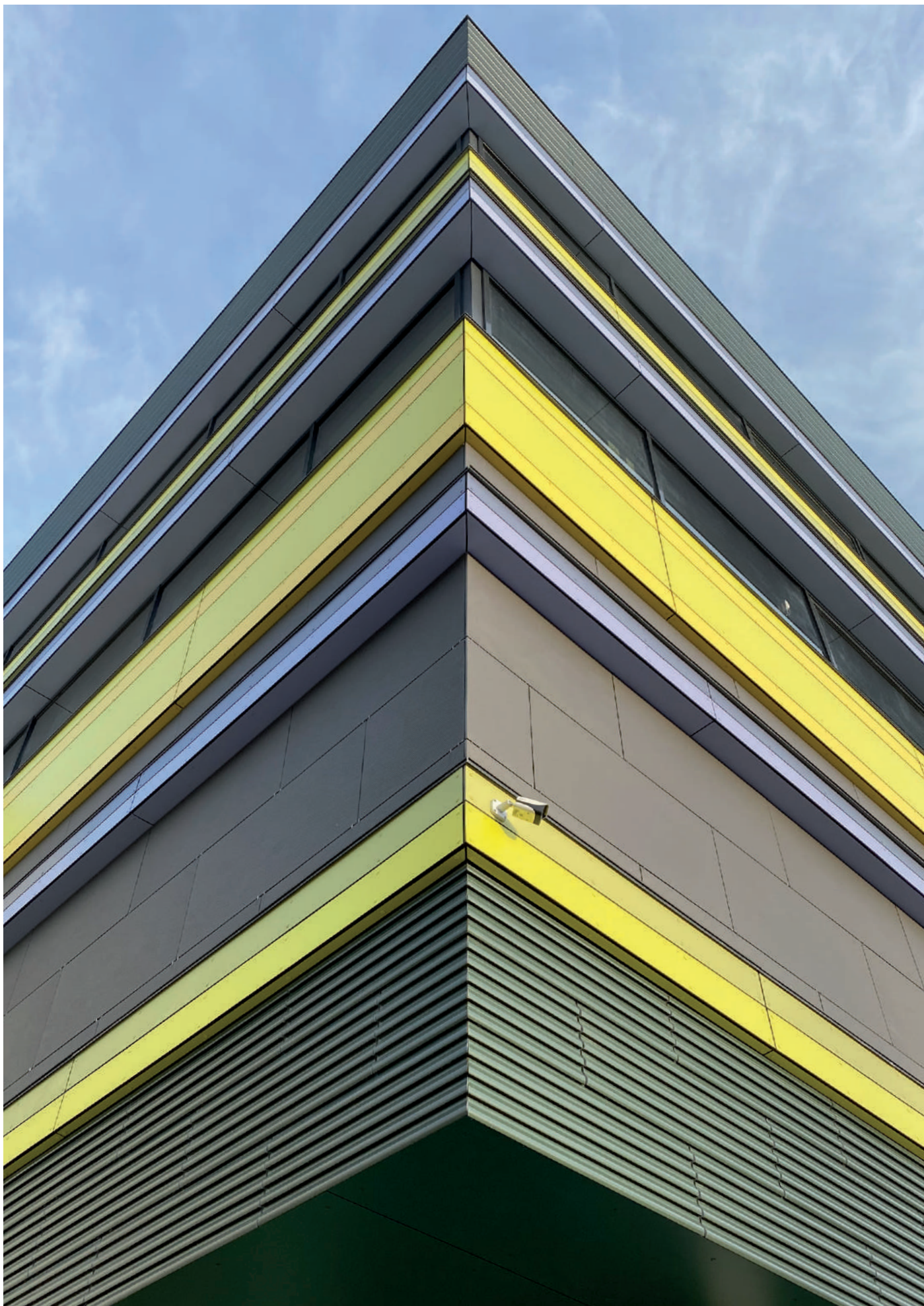
## FK PERSPECTIVE | PERSPECTIVA FK



- |   |  |
|---|--|
| 1_ <b>Tempio tile</b><br>Pieza Tempio             | 5_ <b>Anchorage</b><br>Anclaje                         |
| 2_ <b>Vertical T profile</b><br>Perfil T vertical | 6_ <b>Fixed to sliding point</b><br>Fijación corredera |
| 3_ <b>Horizontal profile</b><br>Perfil horizontal | 7_ <b>Insulating layer</b><br>Aislante                 |
| 4_ <b>Bracket</b><br>Ménsula                      | 8_ <b>Termination profile</b><br>Perfil de terminación |







tempio® [projects] Bergu Music and Arts Elementary School, Skolas iela 8, Upesciems, Garkalnes novads, Leton





KUPI  
ORIGINAL B

Rautatieasema

Järnvägsstation

Railway station





**PROJECT**  
Original Sokos Hotel

**LOCATION**  
Kupittaa, Tuku, Finland

**ARCHITECT**  
Haroma & Partners Oy

**PIECE**



FK-16

**COLOURS**



Black Seattle E1185



Green Glasgow EB3470











**PROJECT**  
M Carnegie Building

**LOCATION**  
316 Neerim Road Carnegie, Melbourne

**ARCHITECT**  
T-A Square Architects

---

**PIECE**



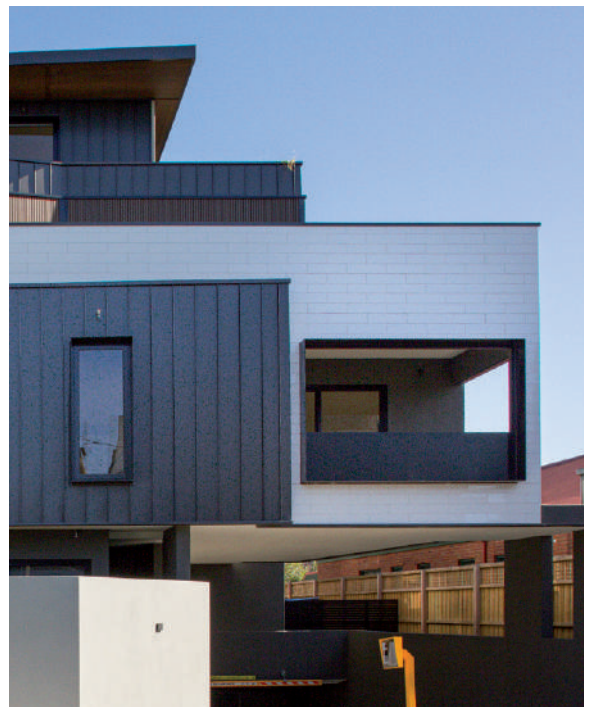
FK-16

---

**COLOURS**



White Madrid EM2220











**PROJECT**  
Just Järvenpään Sairaala

**LOCATION**  
Järvenpää, Finland

**ARCHITECT**  
UKI Arkkitehdit

---

**PIECE**



FK-16

---

**COLOURS**



Red R25-19











**PROJECT**  
Heka Teerisuontie 27

**LOCATION**  
Malmi, Helsinki, Finland

**ARCHITECT**  
Eeva Kilpiö / A6

---

**PIECE**



FK-16

---

**COLOURS**



Red R25-25



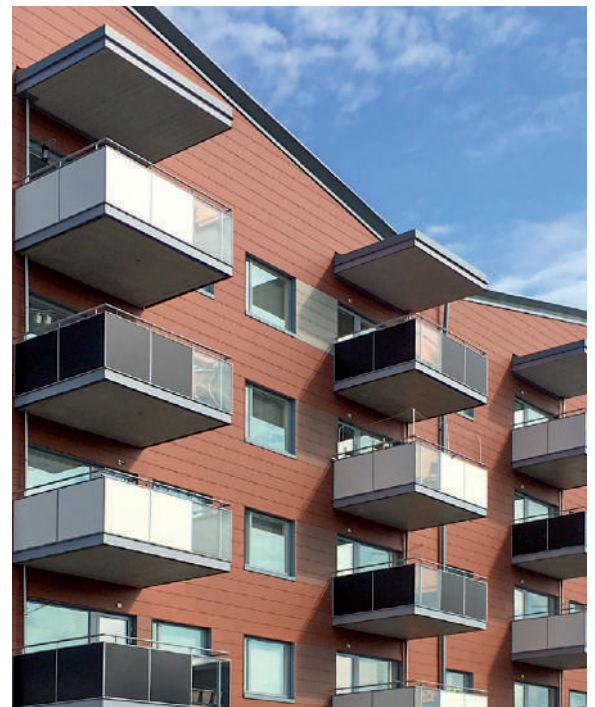
Brown BR2-08



Grey GR1-10

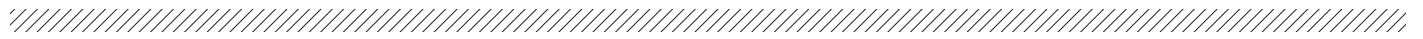


Grey GR2-20





# FS SYSTEM



FS-20 | FS-24 | FS-28



FS-L 2/20 | FS-L2/24 | FS-L2/28



FS-T 7/28



FS-D 5/23



FS-LP 2/28



FS-2B/20 | FS-2B-28

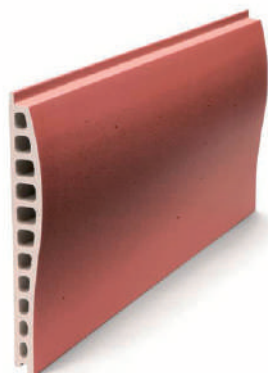


FS-L 3/28



FS-LP 3/28





FS-D 24



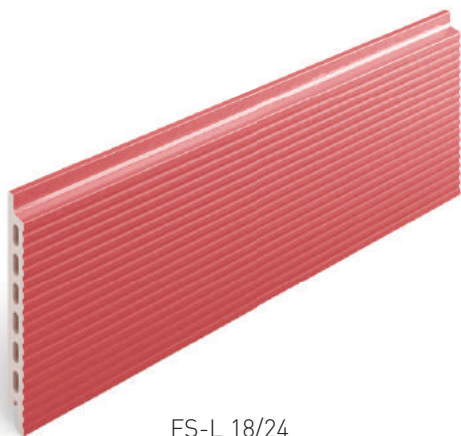
FS-L 4/24



FS-L 5/28



FS-L 7/28

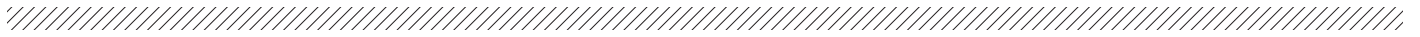


FS-L 18/24

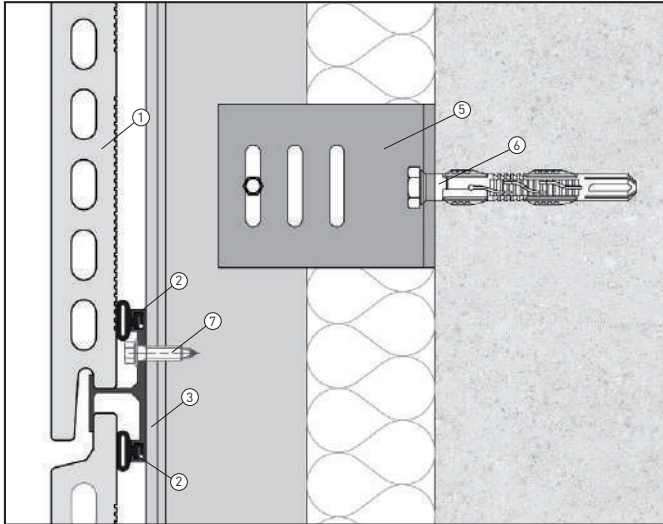
Height module/inch Alto módulo/mm	FS-20	FS-24	FS-28	FS-L 2/20	FS-L 2/24	FS-L 2/28	FS-T 7/28	FS-D 5/23	FS-LP 2/28	FS-2B/20	FS-2B/28	FS-L 3/28	FS-LP 3/28	FS-D 24	FS-L 4/24	FS-L 5/28	FS-L 7/28
200 - 7.67"	■	■	■														
225 - 8.86"	■																
250 - 9.84"	■	■	■														
280 - 11.02"	■	■															
300 - 11.81"	■	■	■	■	■	■	■	■	■	■	■			■			
350 - 13.78"				■													
375 - 14.76"	■																
400 - 15.74"	■	■	■									■	■				■
450 - 17.71"	■																
500 - 19.68"	■	■		■												■	
600 - 23.622"			■														■
length/piece/mm largo pieza/mm	< 1500	< 1500	< 1500	< 1500	< 1500	< 1500	< 1500	< 1500	< 1500	< 1500	< 1500	< 1500	< 1500	< 1500	< 1500	< 1500	< 1500
weight/peso - kg/m <sup>2</sup>	33	42	46	32	39	46	37	30	42	39	52	45	42	38.5	40	45.5	44



# FS SYSTEM



## FS PERSPECTIVE | PERSPECTIVA FS



- |  |  |
|--|--|
| 1_ <b>Tempio tile</b><br>Pieza Tempio                        | 5_ <b>Bracket</b><br>Ménsula                             |
| 2_ <b>Clip</b><br>Grapa                                      | 6_ <b>Anchorage</b><br>Anclaje                           |
| 3_ <b>Vertical T profile</b><br>Peril vertical en T          | 7_ <b>Self-drilling screw</b><br>Tornillo autotaladrante |
| 4_ <b>Vertical joint profile</b><br>Perfil vertical de junta | 8_ <b>Insulating layer</b><br>Aislante                   |







tempio® [projects] KTNG, Busan City, South Korea









**PROJECT**  
200 George Street

**LOCATION**  
Sidney, Australia

**ARCHITECT**  
FJMT Sydney

---

**PIECE**



FS-L 5/30

---

**COLOURS**



White W2-07











**PROJECT**  
Songdo Convensia

**LOCATION**  
Central-ro, Yeonsu-gu, Incheon, South Korea

---

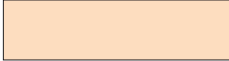



**PIECE**



FS-20

---

**COLOURS**

-  White W2-07
-  Yellow Y00-05
-  Red R05-05
-  Red R25-25







**서울광진경찰서**  
SEOUL GWANGJIN POLICE STATION







**PROJECT**  
Gwangjin Police

**LOCATION**  
Central-ro, Yeonsu-gu, Incheon,  
Republic of Korea

---

**PIECE**



FS-20

---

**COLOURS**



White W2-07



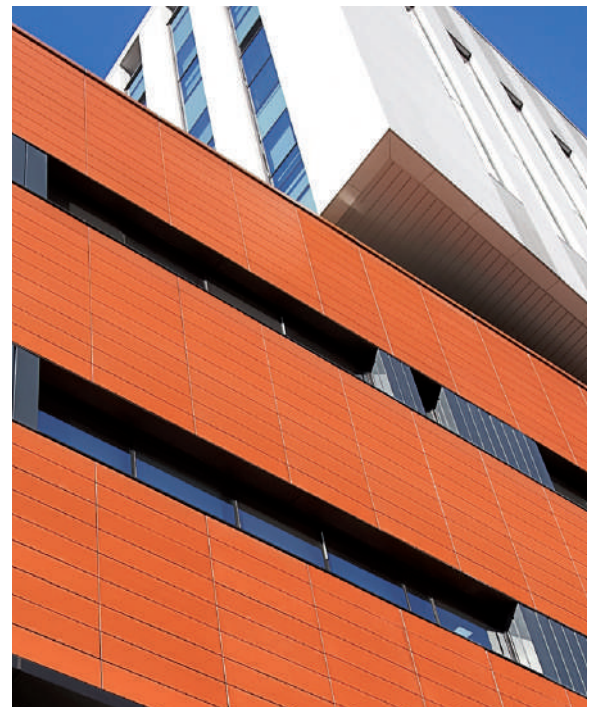
Yellow Y00-05



Red R05-05



Red R25-25











**PROJECT**  
FITI Testing & Research Institute

**LOCATION**  
Gangseo-gu, Seoul, Republic of Korea

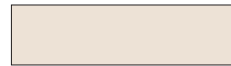
---

**PIECE**

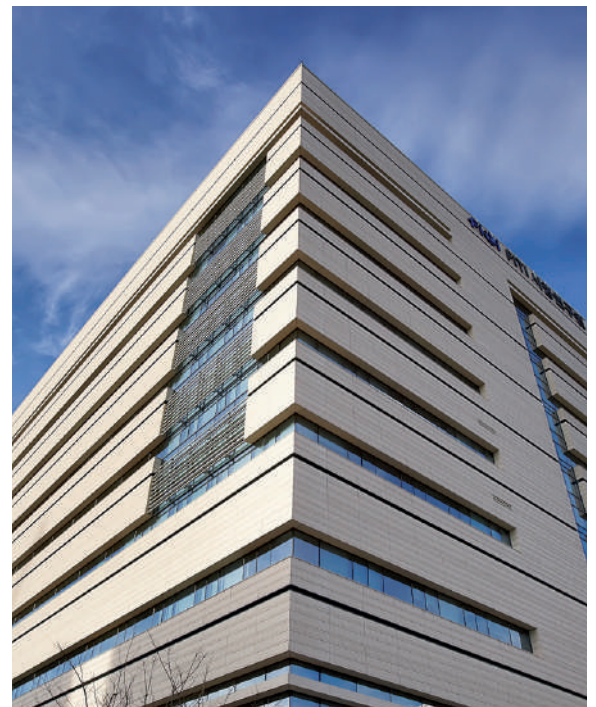


---

**COLOURS**

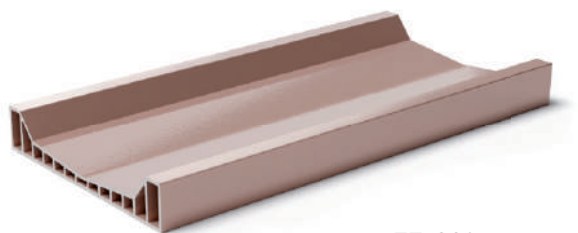
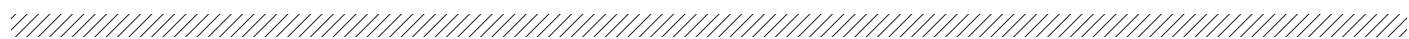


White W00-20





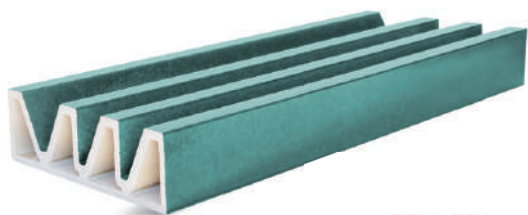
# HIGH PROFILE PIECES



**FF-C30**



**FF-T 1/60**



**FFW-75A**



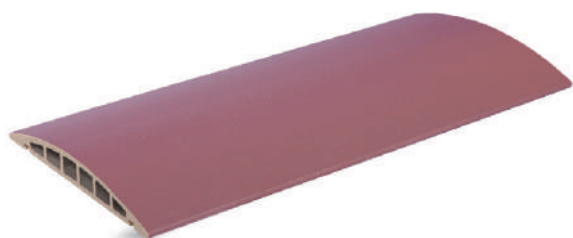
**FFNr66**



**FF3D T**



**FF-1B**



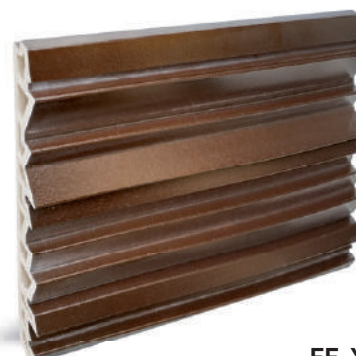
**FF-K 45,5/R500**



**FF-K 30/R300**

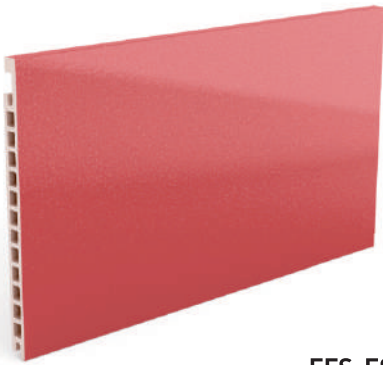


**FF-C 9/65**



**FF-X44**

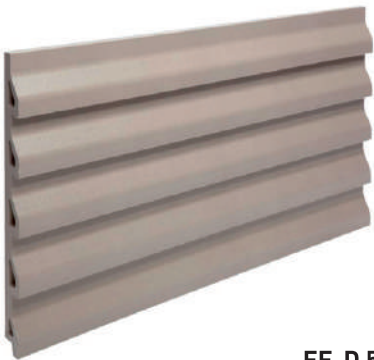




**FFS-ESP-28**



**FF-D 5/23.1**



**FF-D 5/23**



**FF-E 215X197**



**Soft**



**3D corner**



**Tokyo**







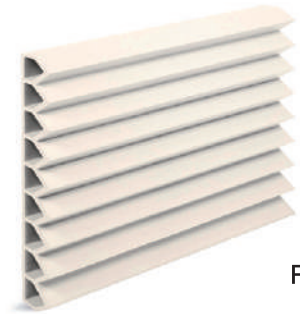


**PROJECT**  
Justice House

**LOCATION**  
Zugdidi, Georgia

---

**PIECE**



FF-C9/65

---

**COLOURS**



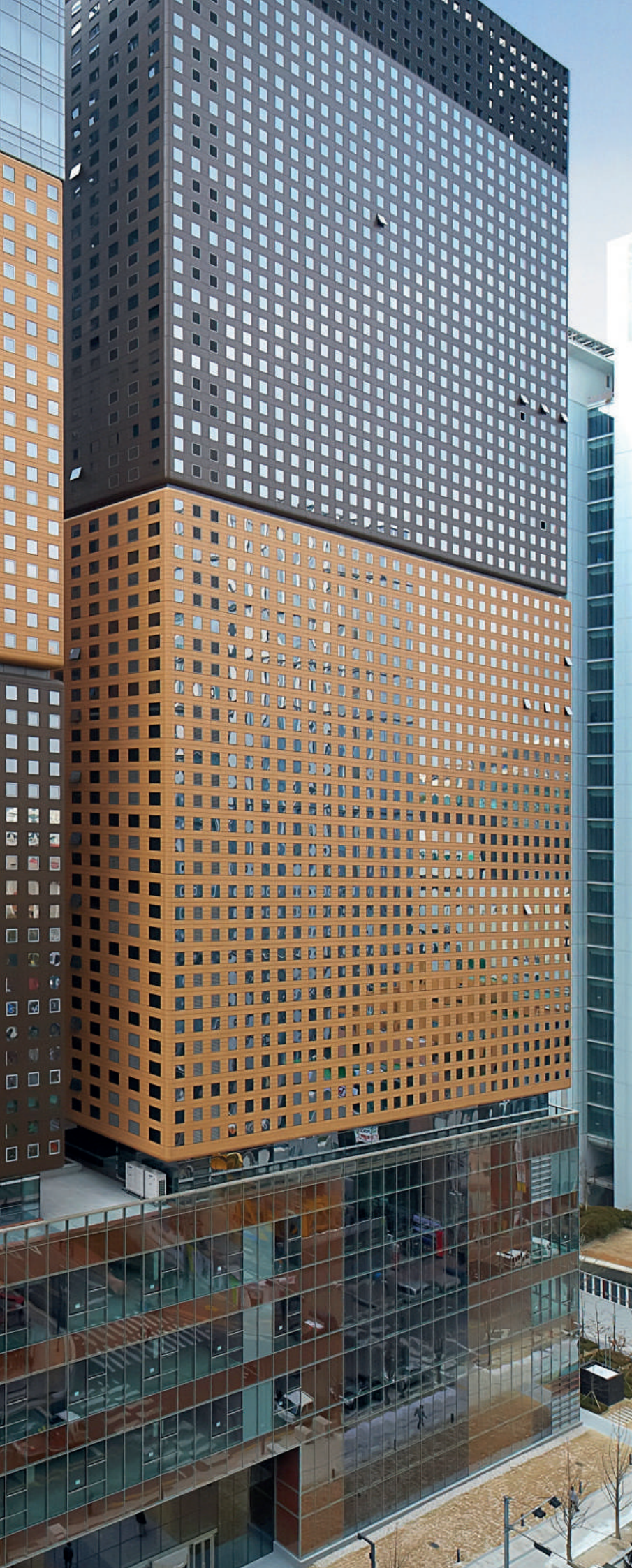
White Formentera EB3210











PROJECT  
D-Tower

LOCATION  
Songdo, Korea

ARCHITECT  
Samoo Architects & Engineers

---

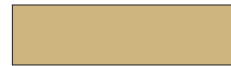
PIECE



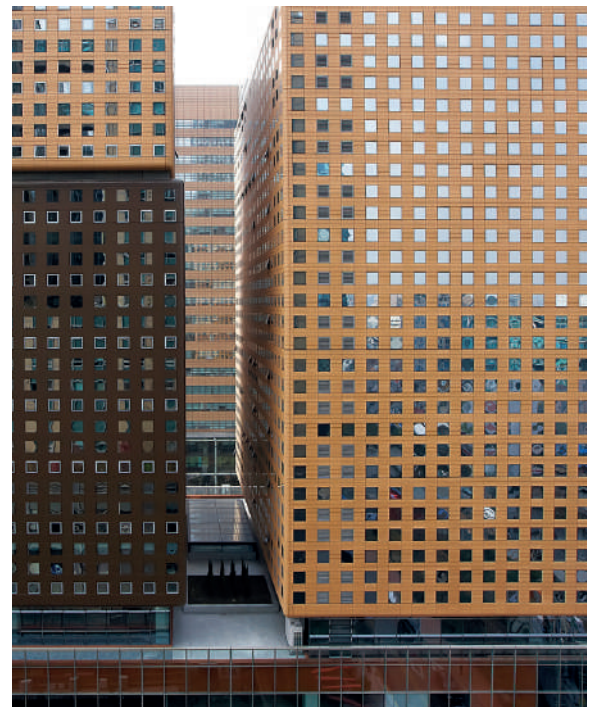
3D Corner

---

COLOURS



Yellow Y125-15











**PROJECT**  
22 Viviendas

**LOCATION**  
Cartagena, Spain

**ARCHITECT**  
Martín Lejarraga Arquitectos

---

**PIECE**



FF-O 3/40

---

**COLOURS**



Blue Volga EB3315





# BAGUETTES











tempio® [projects] Nature by Kronos Homes, Spain



## TEMPIO BAGUETTES ADVANTAGES

### VENTAJAS DE LAS BAGUETTES DE TEMPIO

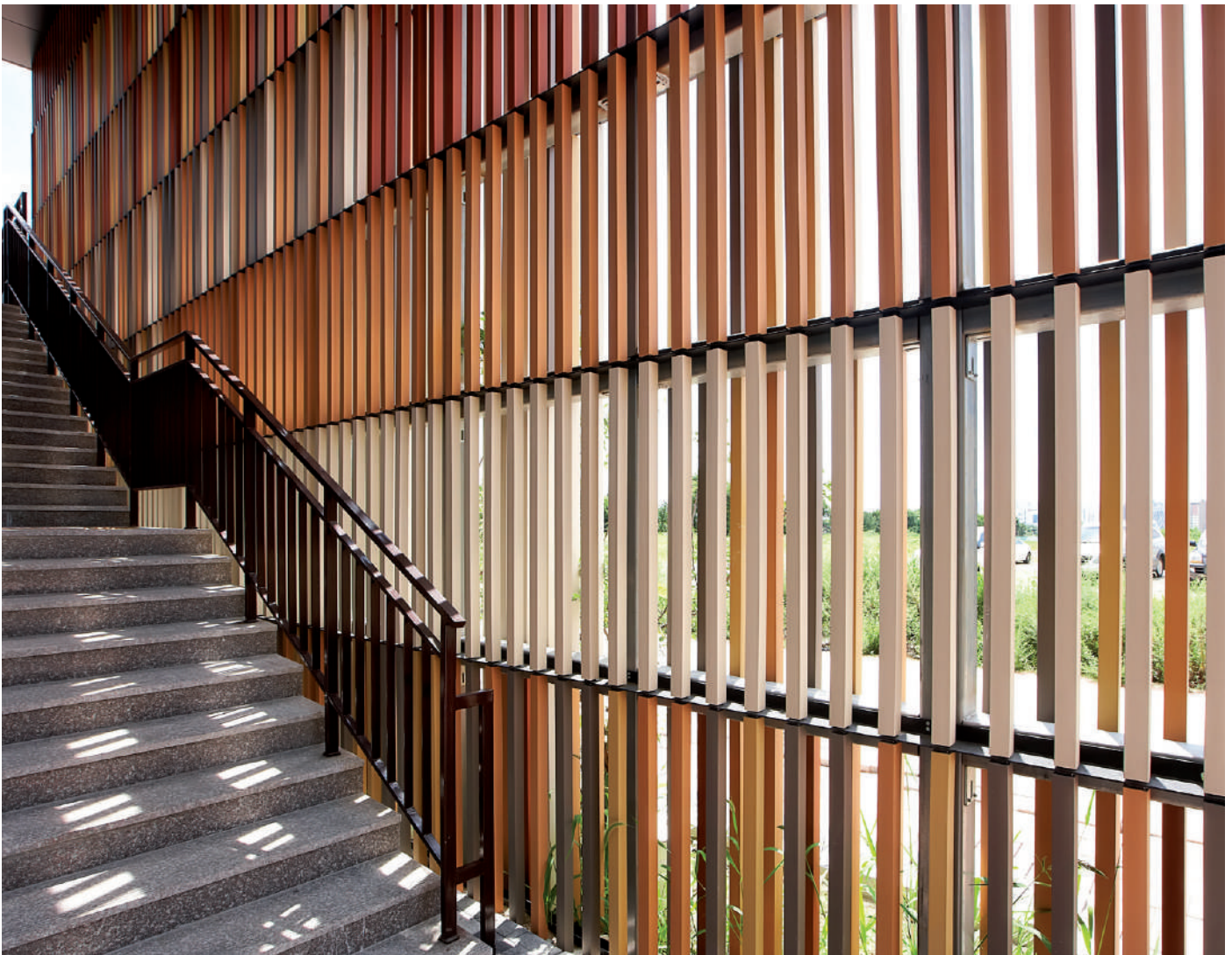
#### EXTERIOR APPLICATION | APLICACIÓN EXTERIOR

- \_Solar shading\_Protección solar
- \_Horizontal and vertical orientation\_Orientación vertical y horizontal
- \_Suitable for any building size\_Apto para cualquier tamaño de edificio
- \_Venetian blind slats with ceramics\_Celosía con lamas de cerámica
- \_Window sill and wall copings\_Alfeizares de ventanas y coronación de paredes
- \_Profiles with hollow chamfers\_Perfiles con cámaras huecas
- \_Customized designed substructure\_Subestructura especialmente diseñada

- \_Customized pieces\_Personalización de piezas
- \_Wide variety of natural terracotta and glazed colours with gloss or matt finish. On request, other finishing colors can be produced\_Gran variedad de colores naturales y esmaltados en brillo o mate. También fabricamos colores bajo demanda.

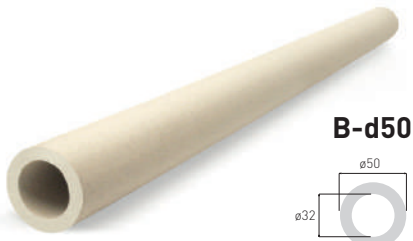
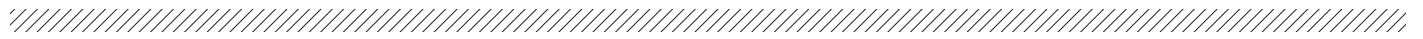
#### INDOOR APPLICATION | APLICACIÓN INTERIOR

- \_Ambient Separation\_Separación de ambientes
- \_Coating for interior walls and ceilings\_Revestimiento de techos y paredes interiores
- \_Ephemeral architecture\_Arquitectura efímera

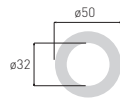




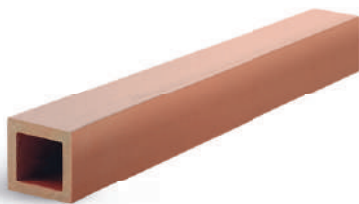
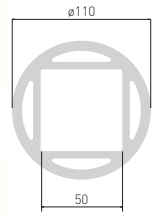
# BAGUETTE SYSTEM



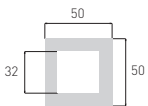
**B-d50**



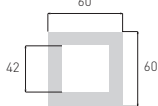
**B-d110**



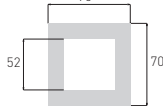
**B-5x5**



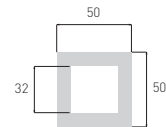
**B-6x6**



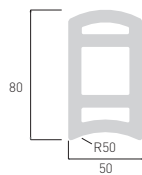
**B-7x7**



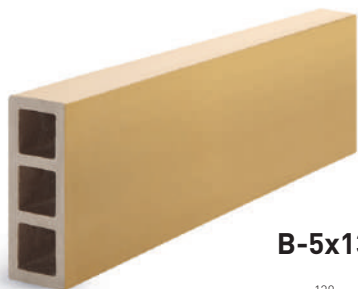
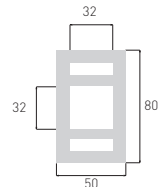
**B-5x5 curvo**



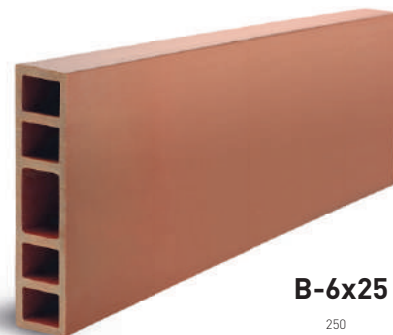
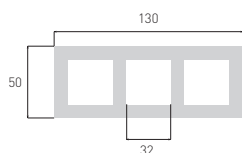
**B-5x8 r50**



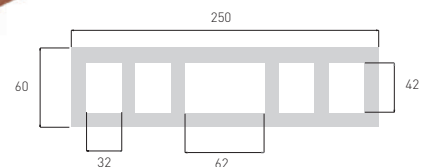
**B-5x8**



**B-5x13**



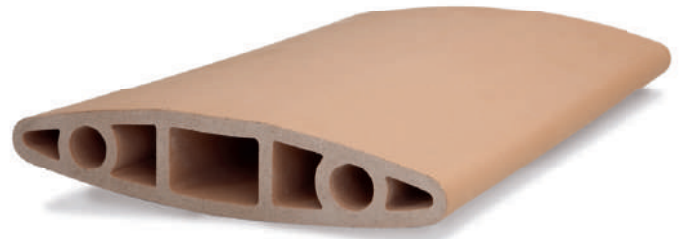
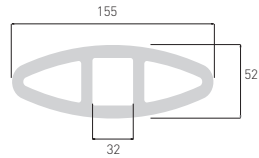
**B-6x25**



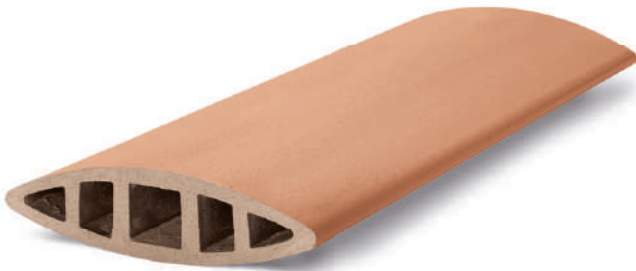
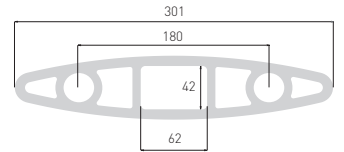




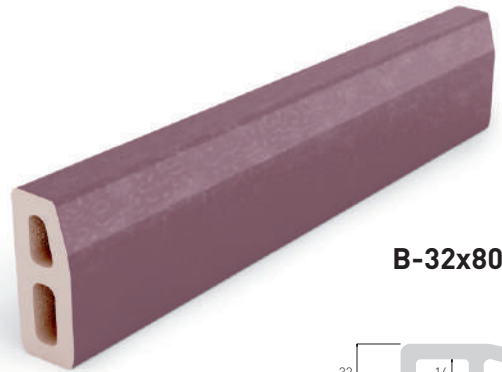
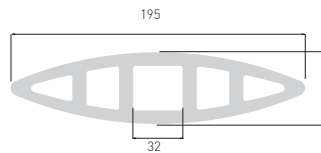
**BO-160x50**



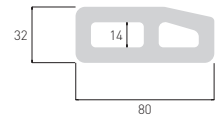
**BO-300x62**



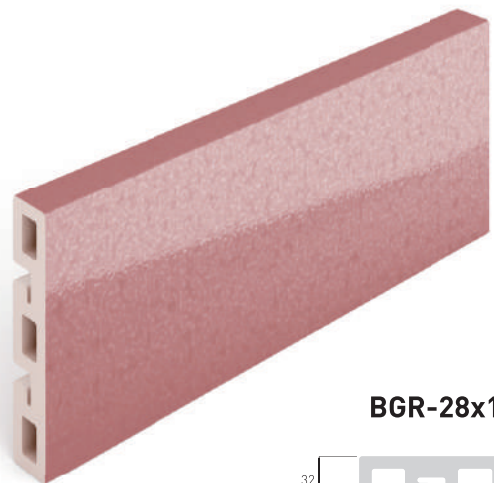
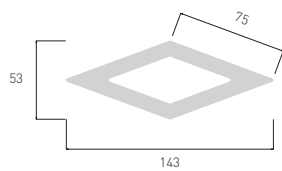
**BO-200x50**



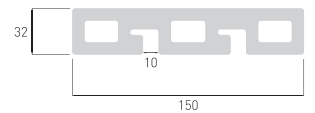
**B-32x80**



**BR0-49x75**



**BGR-28x150**

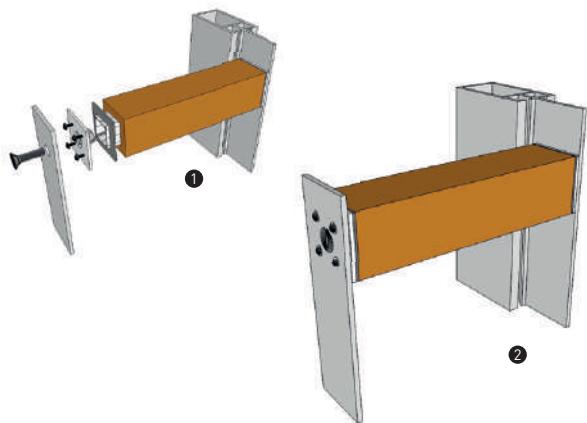




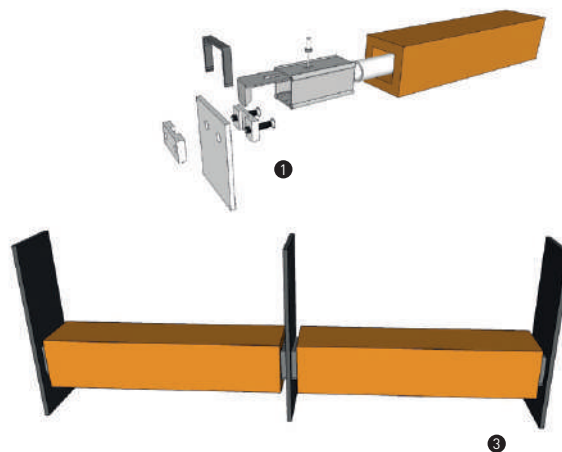
# BAGUETTE SYSTEM

## FIXATION DETAIL | DETALLE DE FIJACIÓN

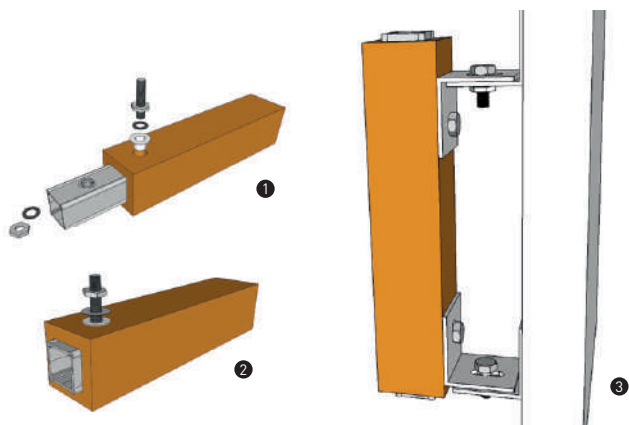
ANCHOR PLATE



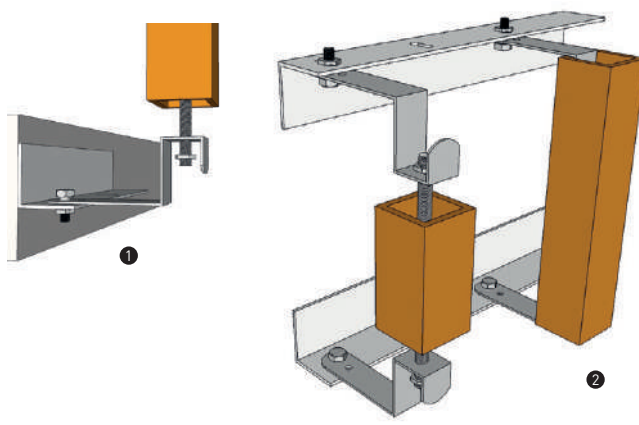
STANDARD



POP NUT



HOOK



Piece/Pieza	B-d50	B-d110	B-5x5	B-6x6	B-7x7	B-5x5 curvo	B-5x8 r50	B-5x8
length piece/largo pieza - mm	< 1800	< 1800	< 1800	< 1800	< 1800	< 800	< 1800	< 1800
weight/peso - kg/metro lineal	2.5	9.2	3.5	4	5	3.5	5.5	5.5

Piece/Pieza	B-5x13	B-6x25	BO-160x50	BO-300x62	BO-200x50	B-32x80	BR0-49x75	BGR-28x150
length piece/largo pieza - mm	< 1800	< 1800	< 1800	< 1800	< 1800	< 1800	< 1800	< 1500
weight/peso - kg/metro lineal	7.7	15	7.6	17.5	9.7	4.5	5.5	6













PROJECT  
Mall L'Fort

LOCATION  
Suwon, South Korea

PIECE



FK-16



B-5x5

COLOURS



Grey GR1-13



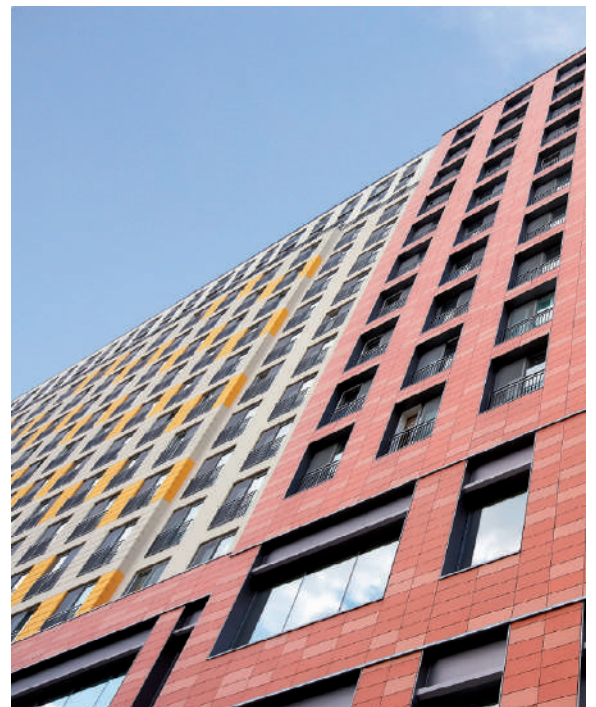
Grey GR2-20



Red R15-10



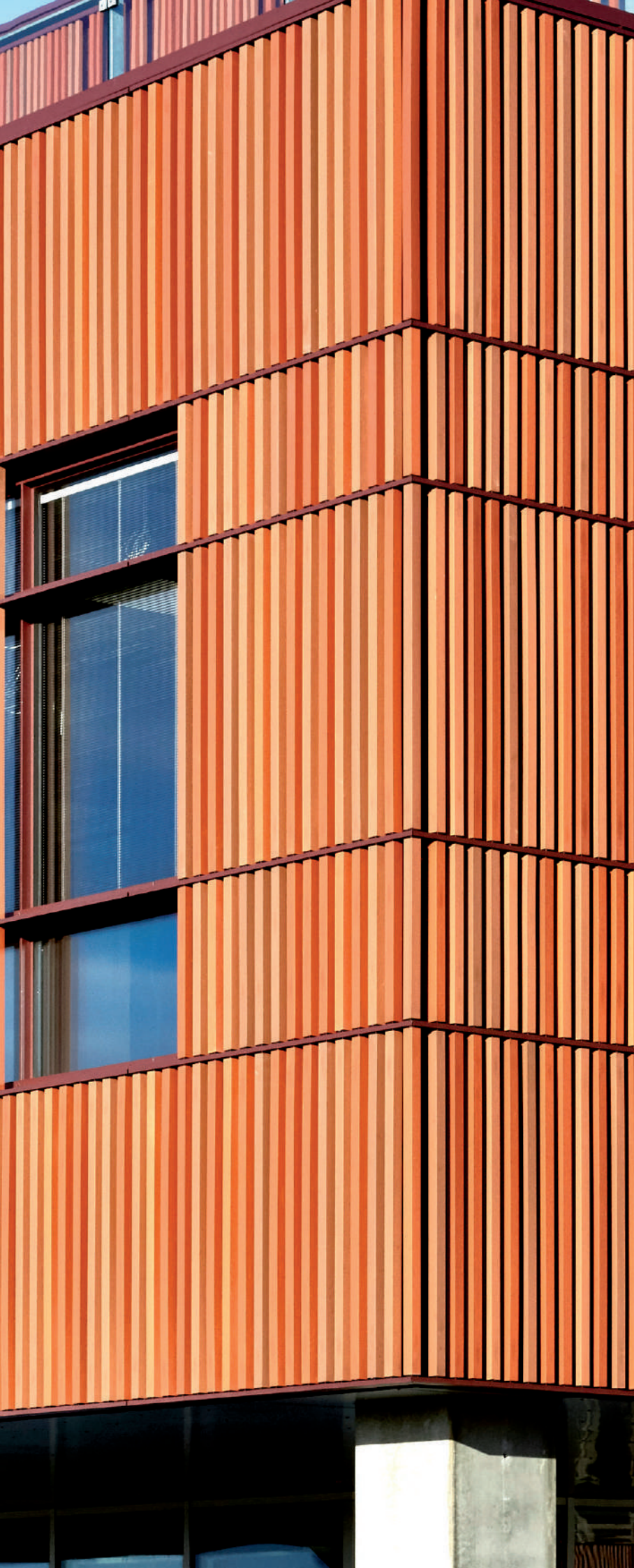
Red R25-25











PROJECT  
Middtbyens Gimnasium

LOCATION  
Viborg, Denmark

---

PIECE



B-5x5

---

COLOURS



Red R15-10



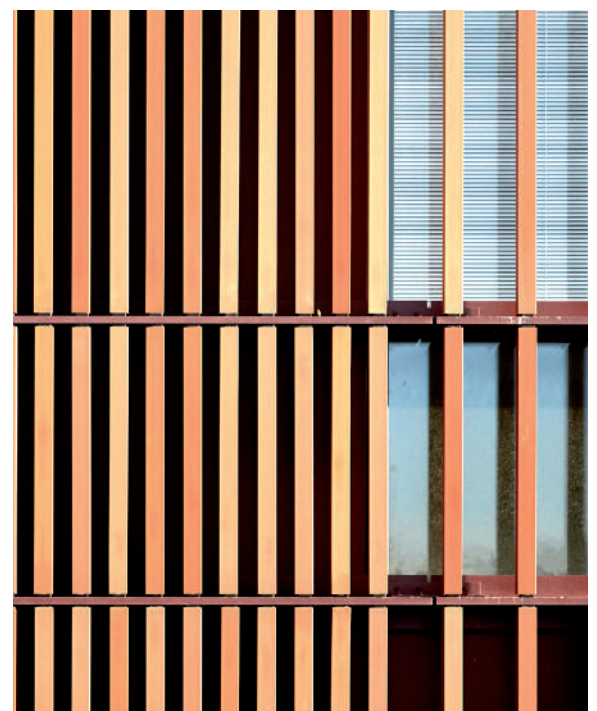
Red R25-19



Red R25-25



Brown BR02-08







PRIMARY SCHOOL





**PROJECT**  
St John Catholic Primary School

**LOCATION**  
Shepherd's Bush, London W12 7QT, Reino Unido

**ARCHITECT**  
DHP Property Consultant

---






**PIECE**

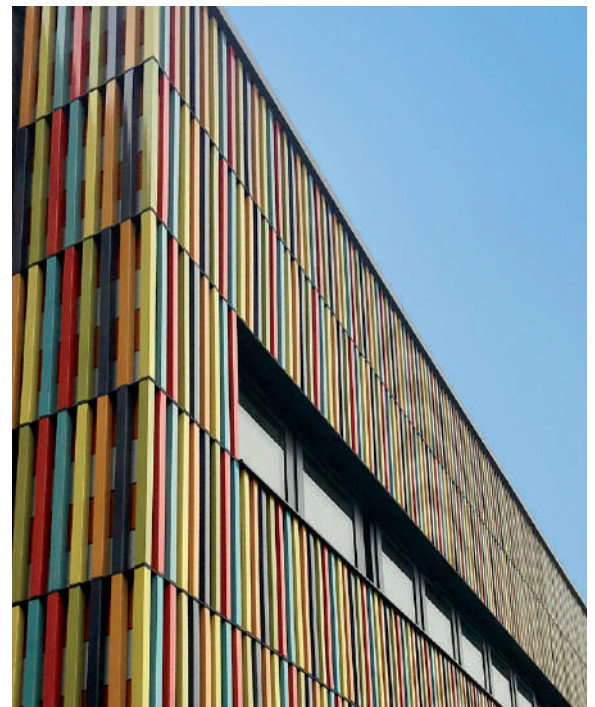


B-5x5

---

**COLOURS**

	Yellow Tanzania EB3660
	Yellow Angola EB3680
	Red Murano EB3550
	Blue Volga EB3315
	Green Surrey EB3460











**PROJECT**  
Monarch

**LOCATION**  
Mosman, Australia

**ARCHITECT**  
Bates Smart

---

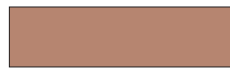
**PIECE**



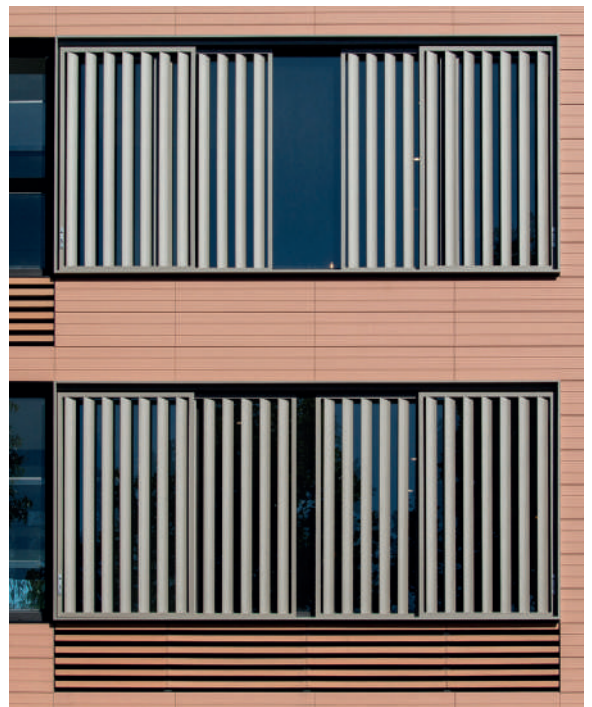
B-5x5

---

**COLOURS**



Red R05-05





# COLOURS

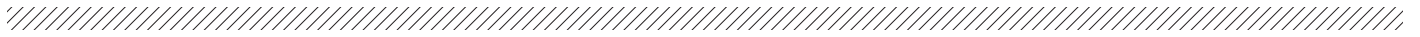








# COLOURS



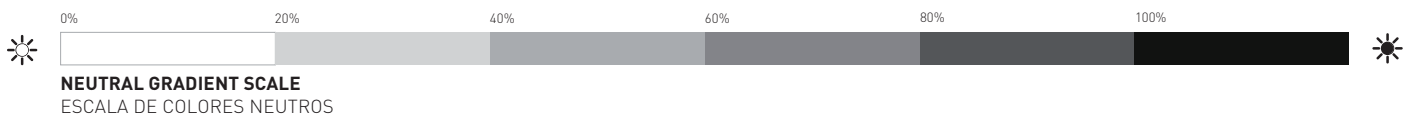
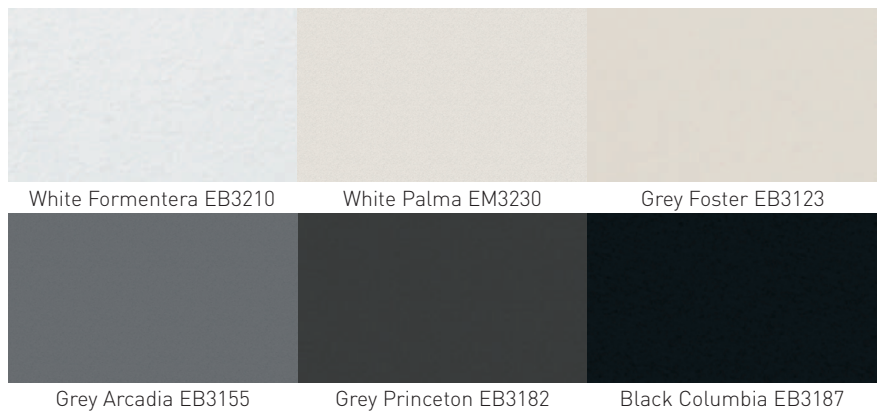
## NATURAL COLOURS COLORES NATURALES



## MAT ENAMEL ESMALTE MATE



## GLOSS ENAMEL ESMALTE BRILLO

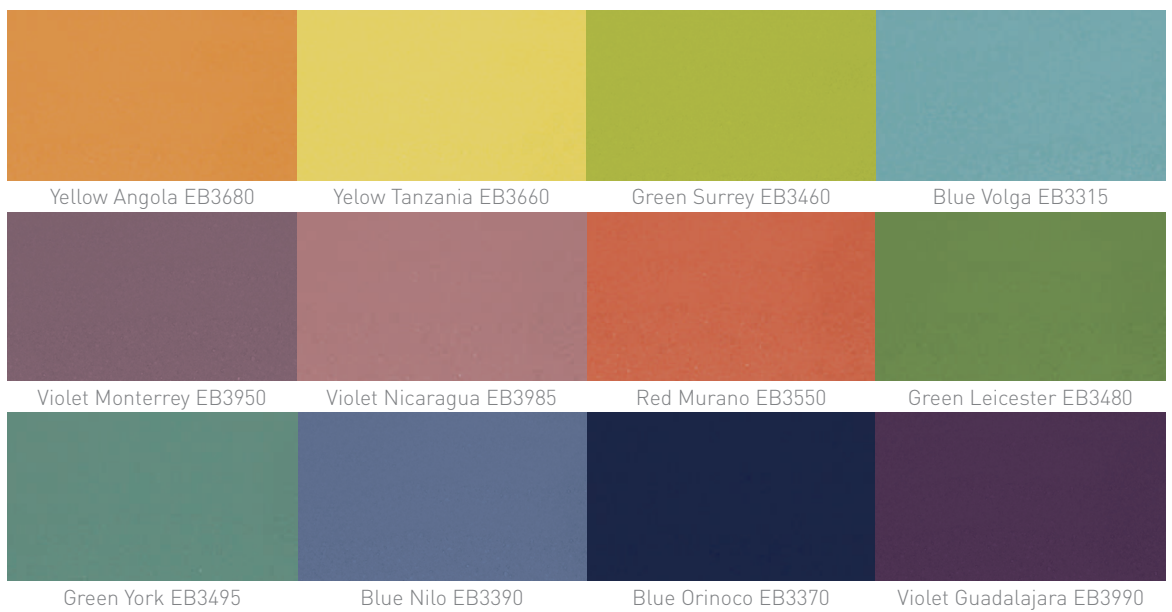




+  
\*  
-



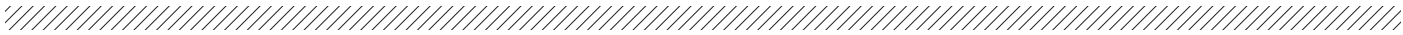
**SATIN ENAMEL**  
ESMALTE SATINADO



**COLOUR SCALE**  
ESCALA DE COLOR



# INKJET COLOURS



Amazonia Miel



Amazonia Café



Amazonia Canela



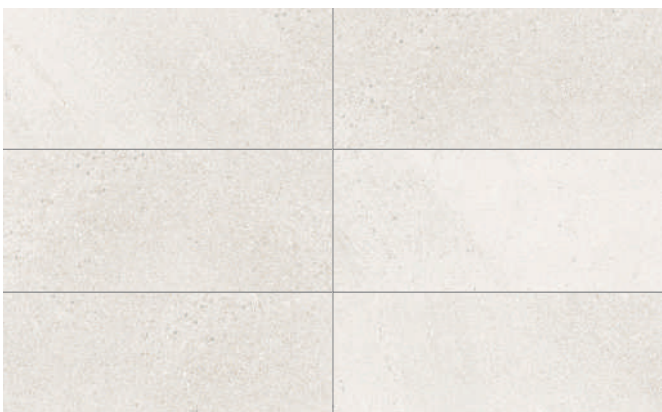
Calacatta Grey



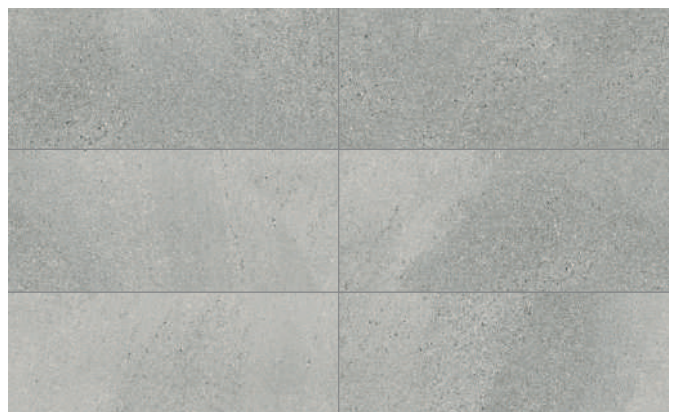
Woods Nordic



Woods Olivo



Stromboli Light



Stromboli Silver

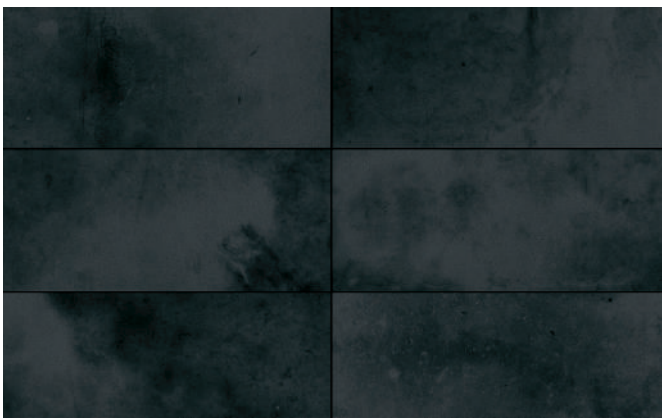




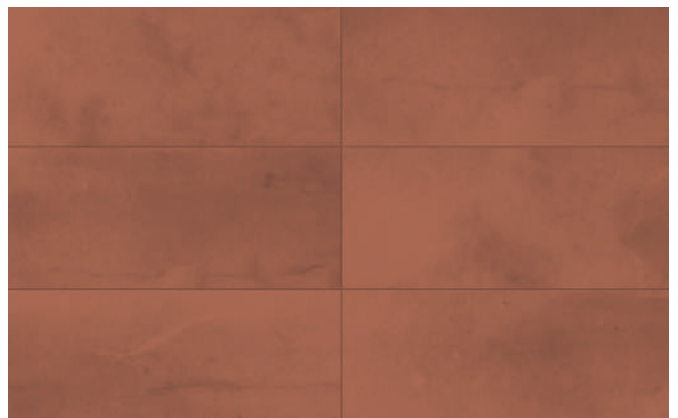
Travertino



Sea Rock Caramel



Anthracite



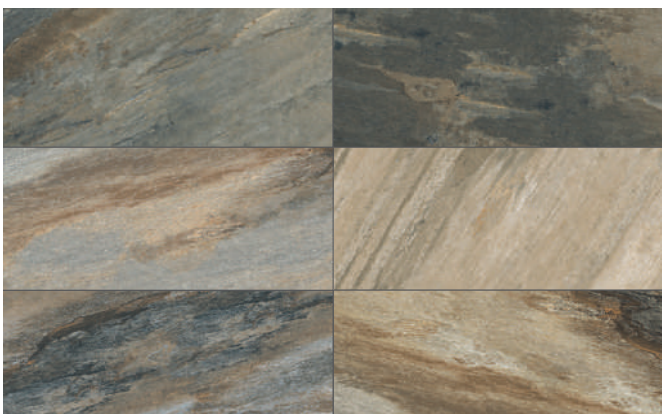
Red FLamed



Canyon Cal



Canyon Creme



Canyon Mix



Cupira Marengo









PROJECT  
Grans Bryggery

LOCATION  
Suecia

ARCHITECT  
Vision Architects

---

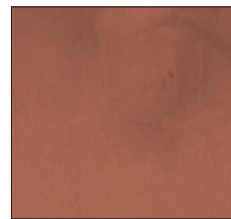
PIECE



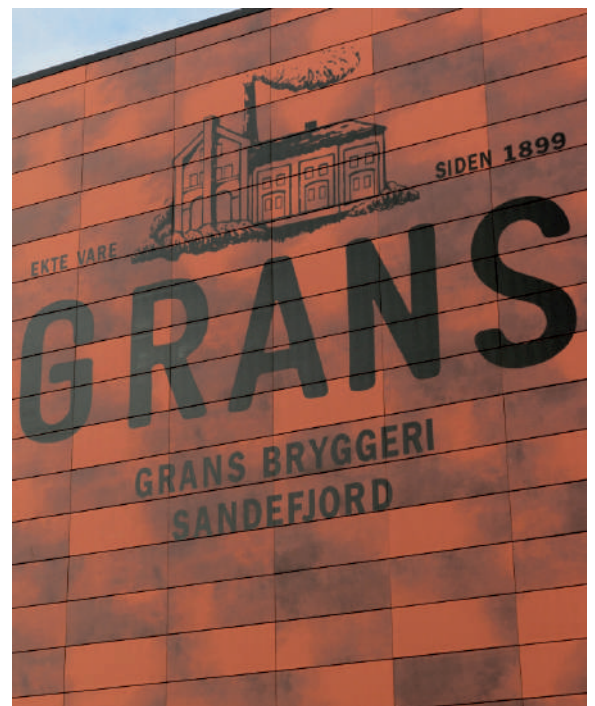
FS-20

---

COLOURS



Red Flamed EK1005







2nd FLOOR  
STUDIO & GALLERY





PROJECT  
Flynn Flats

LOCATION  
Canada

---

PIECE



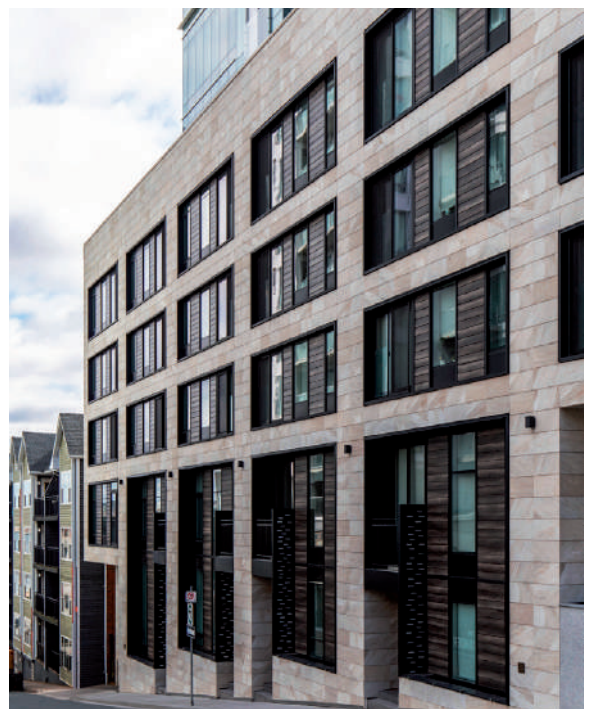
FS-16

---

COLOURS



Canyon Cal











PROJECT  
The Dillon

LOCATION  
Canada

---

PIECE



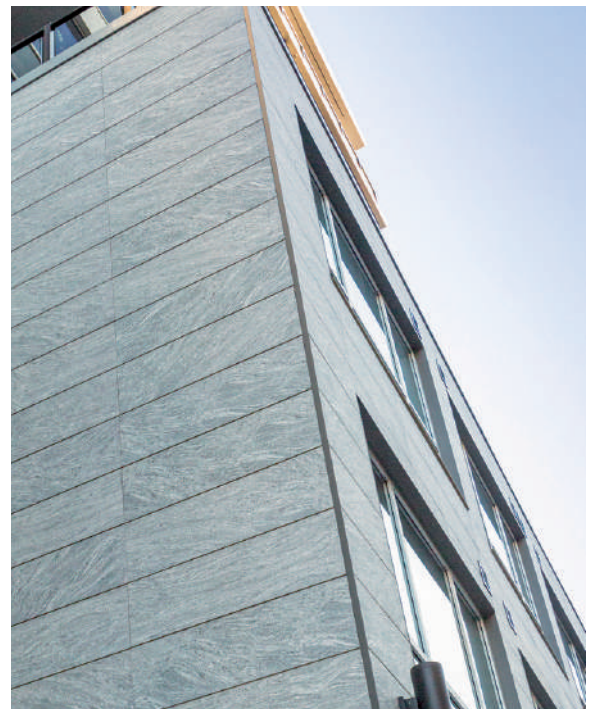
FK-16

---

COLOURS



Black & White EK1006











PROJECT  
Monaghan

LOCATION  
Canada

---

PIECE



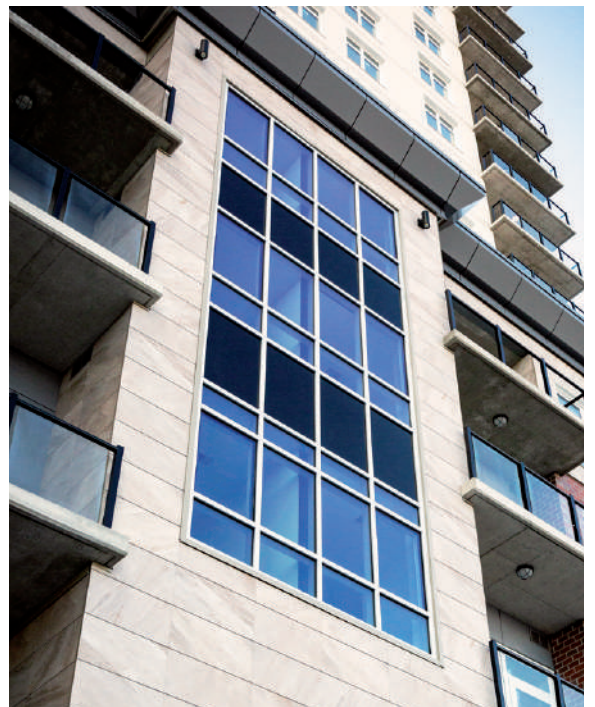
FK-16

---

COLOURS



Canyon Cal







**A** **B**





**PROJECT**  
Ed Data Company

**LOCATION**  
Denmark

**ARCHITECT**  
Vision Architects

---

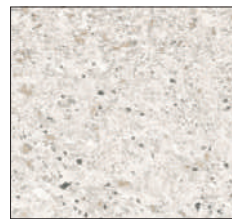
**PIECE**



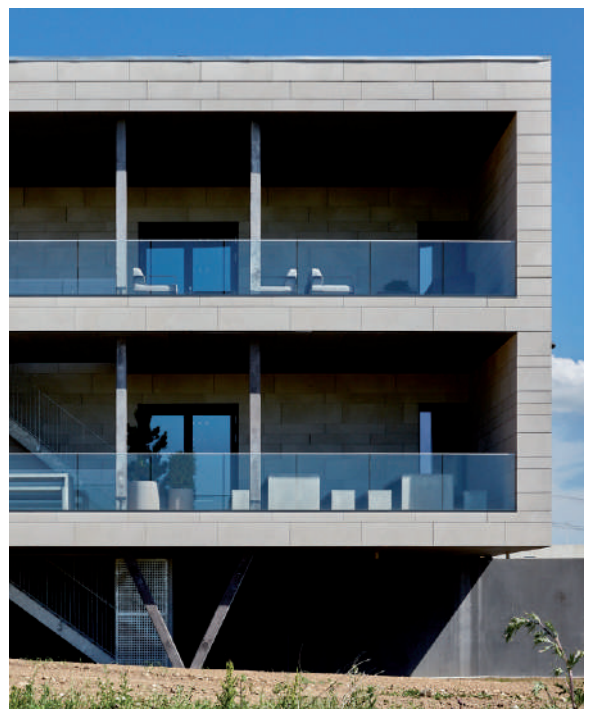
FK-16

---

**COLOURS**



Stromboli light

















tempio®[projects] Saukonkanava, Helsinki, Finland.

## TECHNICAL INFORMATION | INFORMACIÓN TÉCNICA

 Customized designed substructure Subestructura especialmente diseñada	 Impact strenght Resistencia al impacto	EN ISO 10545-5 ✓	 Dimensional tolerance Tolerancia dimensional	EN ISO 10545-2 ✓
 Profiles with hollow chambers Perfiles con cámaras huecas	 Water absorption Absorción de agua	0,5 % < - < 4% 2% < - < 7%	 Thermal expansion Dilatación térmica	✓
 Wide range of formats Amplia gama de formatos	 Frost resistance Resistencia a la helada	EN ISO 10545-12 ✓	 Bending strenght Resistencia a la flexión	EN ISO 10545-4 <b>&gt;17N / mm<sup>2</sup></b>
 Glazed and antural colours Colores naturales y esmaltados	 Thermal shock resistance Resistencia al choque térmico	EN ISO 10545-9 ✓		





CERÁMICA MAYOR, S.A.  
Partida Planet, s/n. 03510 Callosa d'En Sarrià (Alicante-España)  
T+34 965 881 175 | [www.ceramicamayor.com](http://www.ceramicamayor.com)







**CERÁMICA MAYOR, S.A.**

Dirección: Partida Planet, s/n. Callosa d'en Sarrià, Alicante, España (03510)

Centro logístico: Polígono Industrial Supoi 8, Av. Boverot, 6, 12550 Almassora, Castellón

Teléfono: +34 965 881 175

Web: [www.ceramicamayor.com](http://www.ceramicamayor.com)

e-mail: [info@ceramicamayor.com](mailto:info@ceramicamayor.com)

Cerámica Mayor se reserva el derecho de hacer las modificaciones que considere oportunas. Los productos están en continuo desarrollo por lo que pueden tener modificaciones en las especificaciones técnicas. Debido a los procesos de impresión, los colores que aparecen en este catálogo deben considerarse aproximados, no exactos. Toda la información de este catálogo está protegida por copyright. Está prohibida la reproducción total o parcial de los textos, imágenes y representaciones gráficas sin la autorización expresa de Cerámica Mayor.



tempio®

VENTILATED FAÇADES  
FACHADAS VENTILADAS

EDITION - 2021

Mayor tempio®  
CERÁMICA

CERÁMICA MAYOR, S.A.  
Partida Planet, s/n. 03510 Callosa d'En Sarrià (Alicante-España)  
T+34 965 881 175 | [www.ceramicamayor.com](http://www.ceramicamayor.com)



[www.tempio.es](http://www.tempio.es)